

Truck sampler, rail system



Complete and homogeneous sampling from both sides, between two scales, from trailers and railway wagons

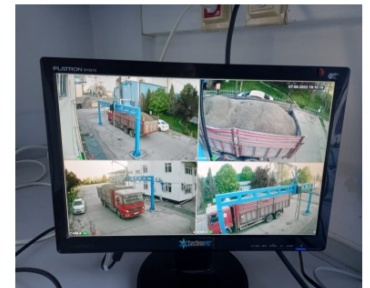
- Sampling area 8.6x16 m (with rail)
- Column or optional wall mounting
- Ability to take samples in accordance with ISO-24333 Standard
- Easy and understandable remote control use
- Simple and fast installation

Why GAV 400?

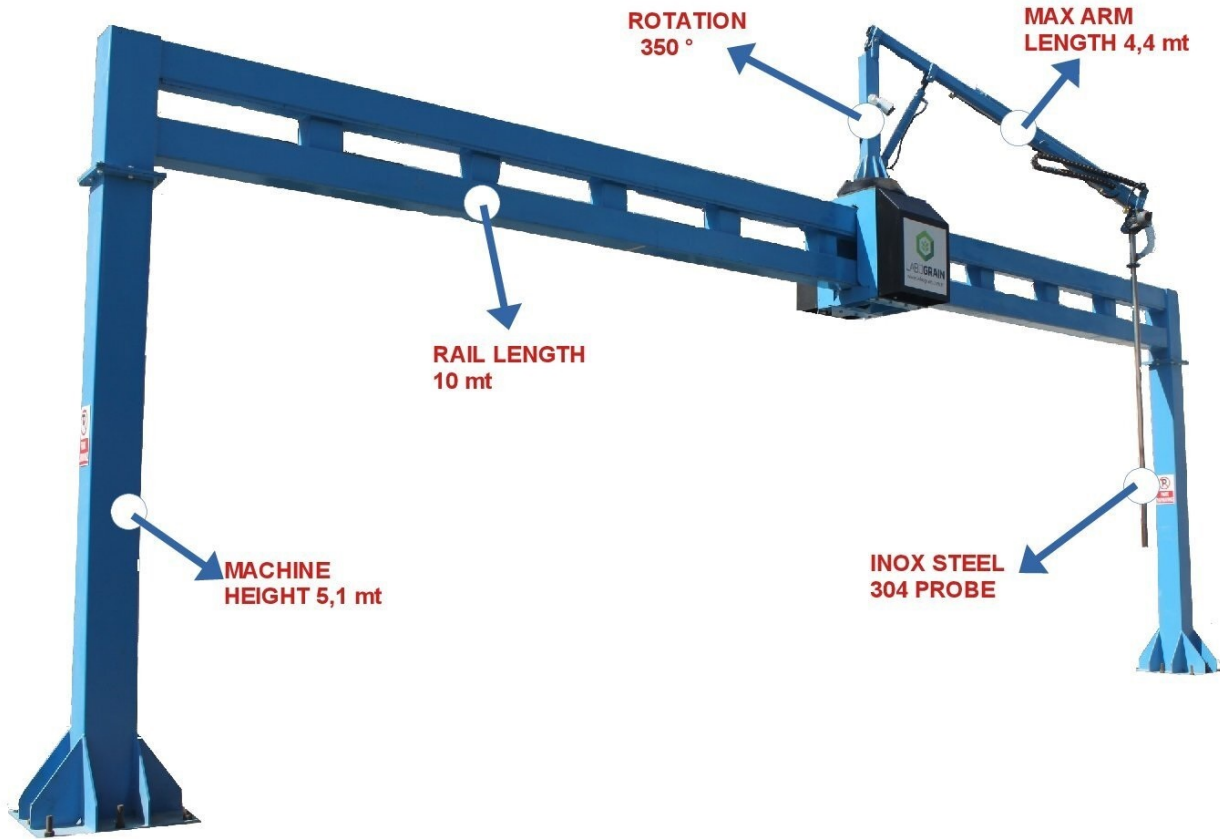
It is rail type and can take samples from the entire chassis, including the 13.60 m vehicle chassis, without leaving a blind spot. Thanks to the blower used, the device transports grains such as wheat, barley, corn, sunflower seeds, paddy, rye, oats, as well as heavy products such as beans, chickpeas and all feed raw materials to the sample container in the laboratory in 2-12 seconds (30 meters). With the sample collection container that has a transparent window, the sample amount can be monitored and the sampling amount can be adjusted if desired. The sampling arm (boom) of the device consists of two parts: inner and outer boom. The device has a length of 260 cm in the closed position and 430 cm in the open position. The length of the probe of the device is 250 cm. The sampling probe can move 350 degrees. In this way, it has the ability to take samples from both sides simultaneously without moving the vehicles. Thanks to the joystick and remote control, it can be controlled both from the control room and from near the vehicle. There is a 2-year warranty and 10-year spare parts warranty, excluding usage errors.

Function

The sampling probe is immersed in the product with a wired or wireless remote control. Meanwhile, a product sample suitable for the inner pipe compartment of the sampling probe is taken. GAV400 works with a double suction system. In this way, the sample to be taken is taken as it is in the environment, without the effect of vacuum. Any bulky light loads from the environment (e.g. broken grain, dust and dirt) are not absorbed with the sample. Vacuum only affects the sample inside the probe. In this way, it only takes the sample in the sampling probe and transfers it to the sample container in the weighbridge room or laboratory with the help of a PVC hose. transfers. Here the sample is separated from the air in the sample container, evacuated and made ready for quality control.

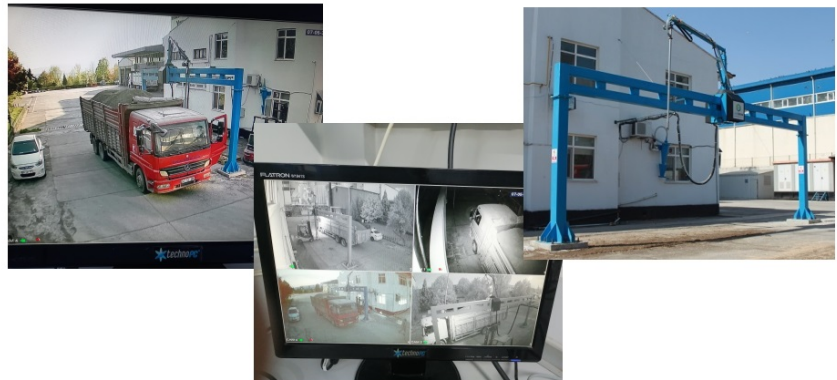


Truck Sampler Technical Specifications



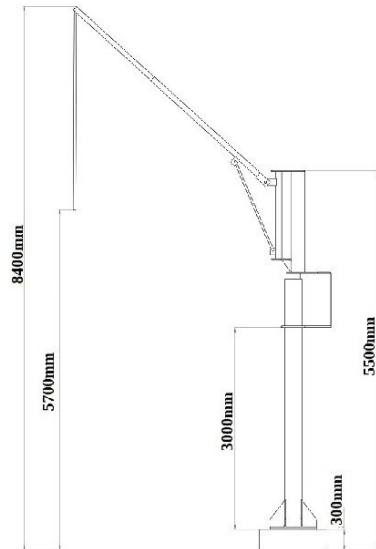
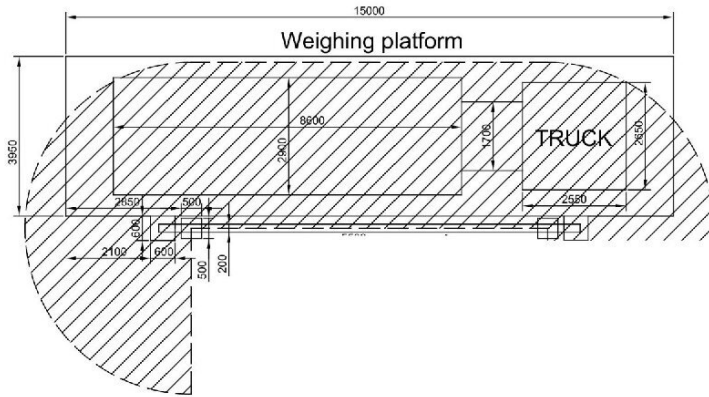
TECHNICAL SPECIFICATIONS

- **POWER SUPPLY**
380 VOLT 3P + N + E 50 HZ
- **RAIL DIRECTION MOTOR**
380 VOLT 1,1 KW
- **AIR BLOWER**
380 VOLT 2,2 KW
- **BLOWING MOTOR**
220 VOLT 1 KW
SIDE CHANNEL
- **HYDRAULIC UNIT**
380 VOLT 1,5 KW
- **HYDRAULIC PUMP**
6 CC

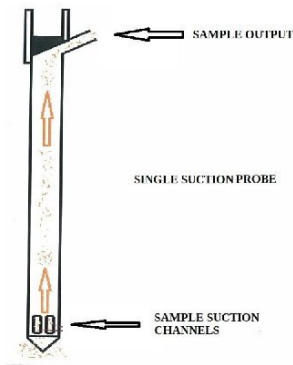


Dimensions for GAV 400

Sampling area

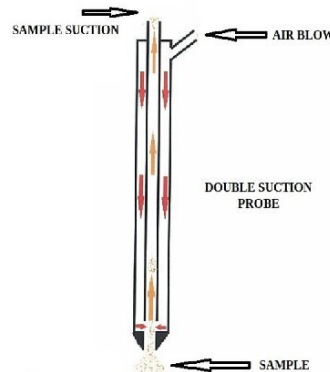


Probes



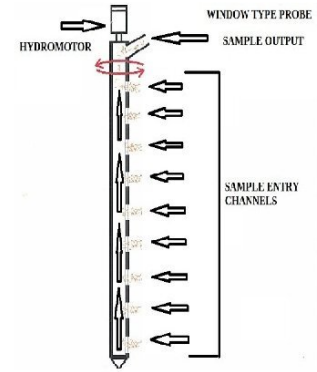
Probes (Single Suction)

Open-ended fixed vacuum suction probes use a constant vacuum pull at the inlet opening during sampling. They may over-represent lightweight material when sampling a vehicle. Therefore, depending on the sample to be taken, the intake part on the probe tip should be adjustable according to the sample shape and intake amount.



Probes (Double Suction)

Double suction probes are designed with 2 chambers; the outer chamber has forced airflow travelling through it to the bottom portion of the core tip opening, and the inner chamber has vacuum air pressure drawn up through from the core tip opening. In order to achieve a neutral/vacuum pressure at the sample entry point of the core tip opening of the probe, the forced airflow going through the outer chamber must be controlled. To control this, the double suction probe is manufactured with one or more air adjustment relief holes. Some manufacturers also include air adjustment relief holes on the air supply motor assembly.



Probes (Compartment)

Compartment type probes are designed with 3 chambers. The first chamber is of neutral air pressure when sampling. The second chamber has an air intake/vent located at the top of the chamber/probe, allowing air to be drawn into the chamber as needed. The second and third chamber have a vacuum air pressure to draw the sample from the second chamber, through the third chamber and to the inspection office. Manufacturers will recommend specific makes and models of vacuum systems based on the installation configuration for each system, as there is no forced airflow requirement or adjustment for these types of probes.

ACCESSORIES INCLUDED



BLOWER

3 Kw 380 volt, 3000 rpm power has strong suction and blowing feature.



CAMERA SYSTEM

It is a set with 4 cameras, 1 recording device, 1 20" TV led, 1 hard disk with enough recording space and enough cables.



REMOTE CONTROL

It can be used at distances up to 30 metres in a healthy way. It has a small remote control that can be easily carried in a pocket.

OPTIONAL ACCESSORIES

- Control board with incorporated display
- long distance blower
- Probe pipe oversize length (2700mm)
- Probe pipe oversize diameter (60 mm)

Warning: If any of these accessories are desired, they must be specified during the order. Otherwise, our company is not responsible for the negativities that may arise.

FULL AUTOMATIC SAMPLING SYSTEM (OPTIONAL)



Delta DOP-112WX 12" Touch screen

- The number of times it can take samples can be adjusted via the touch screen.
- The device can automatically take samples from both sides with a single button.
- Pre-programmed case sizes can be selected and sampling can be performed via the device control panel.
- The device works with an automatic system. It can also be operated manually if desired.
- The number of samples taken can be adjusted via the control panel.
- The device can be monitored from above and via the control panel with a high-resolution camera. At the same time, the points where the sample will be taken are also monitored on this screen.
- The amount of sample taken from a single point can be adjusted.

Device sampling observation camera (high-resolution camera)



1/3" CMOS Sensor
2.8mm Fixed Lens
0.08 Lux Color
BLC/HLC/WDR (120dB),
3DNR, AWB, AGC, ICR Tripwire (Virtual Border),
Intrusion Analysis IP67, PoE, 20fps@
4MP



LABOGRAIN

Tahıl Analiz Sistemleri

İvedik Organize Sanayi Bölgesi 1354. Cadde Fora İş
Merkezi 138/82 Yenimahalle – ANKARA
export@labograin.com.tr - www.labograin.com.tr